

MITRE 10
MEGA

MITRE 10

HOW to...

A PROJECTS PUBLICATION



WIN
ONE OF TWO
SHOWERDOMES
WORTH \$400 EACH
- SEE PAGE 22

Top tips for your kitchen (and bathroom)

Get yourself
into hot water

Harden up:
Concreting – part II

Lighting for mood,
work and security

Brush up
on painting

Keeping your
garden green

June 2011 • \$5.90



FREE WITH \$50 PURCHASE AT
MITRE 10 **MEGA**

MITRE 10



SHIFT_the way you move

About as far away from the lawns as you can get.



New Pathfinder 450T.

Mowing lawns versus family adventures? With the new Pathfinder it's no competition. Simply load up the family, hook on the boat, throw in the bikes, kayaks and tent and leave the city far behind. And with seven seats you can even take an extra friend or two.

Power is up to 140kW and torque is now 450Nm making long journeys short. Plus the improved interior styling means you won't want to get out when you get there. And if that wasn't enough, there's a host of other goodies like Bluetooth, Xenon headlights, Intelligent Key and MP3 player auxiliary input to boot. Pathfinder 1, lawns 0.

Visit nissan.co.nz for more details.

NIS33261BWA



contents

- 4 WARM WINTER WATER**
Hot water in the middle of winter is a must – How To makes it efficient.
- 12 KOOL KITCHENS**
With the right approach classy kitchens are a step away.
- 18 BATHROOM BLING**
Step into luxury with our How To upgrade guide.
- 28 READY, SET, POUR**
Part two of our concrete series gets you set for success.
- 34 ILLUMINATE YOUR LIFE**
Lighting makes the difference and we give you the How To guide.
- 38 SPOT THE LIGHT**
Light the night with motion sensor lights.
- 42 BRUSH UP ON YOUR SKILLS**
Getting to grips with your paintbrush makes the difference.
- 48 SIX WAYS**
Banish pests and disease in the garden with our six How To tips.
- 50 CHECKLIST**
Tend to your garden in between the storms this winter.
- 52 GARDEN GREEN**
Get back to your roots with our natural tips on great gardens.



Volume 6, Issue 5
Mitre 10 Projects How To magazine is published 11 times a year by MMS Publishing Ltd.
www.nzprojects.co.nz
info@nzprojects.co.nz

Managing Editor:
Scott Wilson • Phone 021-725 061
Email: scott.wilson@nzprojects.co.nz

Editor:
Shaun Evans • Mobile 021-1529136
Phone 09-889 7888
Email: shaun.evans@nzprojects.co.nz

Sales Manager:
Chris Yates • Phone: 027 573 2005
Email chris.yates@nzprojects.co.nz

Contributors:
Scott Wilson, Sandy Johnson,
Je t'aime Hayer, Shaun Evans.

Marketing:
Juliette Bavister – Muse Marketing
juliette@musemarketing.co.nz

Design and Layout:
Bernadette Tipene, Twist Design
Phone 021 323 904

Printer:
Nicholson Print Solutions

Enquiries:
MMS Publishing Ltd
P O Box 14069
Five Cross Roads
Hamilton 3252.
0800 NZPROJECTS (0800 697 765)

Join us on Facebook (How To Magazine) and Twitter (NZHowTo)

New Zealand Subscriptions:
www.emags.co.nz/projects
0800 624 700
1 year (11 issues) - \$49.00
(save 24% off the cover price)

NZProjectsmagazineisamonthlypublication, produced 11 times a year ISSN 1177-6765. MMS Publishing reserves the right to accept or reject all editorial or advertising material. No part of NZ Projects How To magazine may be reproduced without express permission of the publisher. All rights reserved. All letters to the magazine will be considered for publication unless clearly marked to the contrary. NZ Projects How To magazine accepts no responsibility for the return or condition of unsolicited manuscripts, art or photography material.

Limitation of liability: NZ Projects How To magazine has been produced to provide the basic and general information required when undertaking home improvement projects around your home. It is not designed to replace the advice you may require in certain applications around your home. The contents of any article may need to be modified for a particular site and circumstances pertaining to some projects. Local bylaws pertaining to certain construction or home improvements should always be adhered to and we advise contacting a suitably qualified tradesperson when you require expert services or advice.

Yates iPhone problem solver app

The most popular part of the Yates website – www.yates.co.nz – is consistently the Garden Problem Solver with its pictures and information about common pests and diseases that trouble garden plants. Now, with the free Yates iPhone Problem Solver App, iPhone and iTouch users are able to have their own garden problem solver at their fingertips. All they need to do is to visit the iTunes store and download the free Yates Problem Solver App.

Tech-savvy (especially younger) homeowners who would never think to listen to a gardening show or read a gardening magazine, will feel quite comfortable about using the images on their iPhone or iTouch screen to identify their garden problems. Then, once they've identified the pest or disease they'll be able to check out the solutions to their problems and add them to a 'wishlist', an electronic shopping list that can be taken to the store.

This application provides instant gratification which means that we are right there when our customers need us. Yates continues to invest in communication technology and recognises that this is the way of the future – even for gardeners!

Yates Garden Problem Solver App is available from the iTunes Store.



Stanley introduces new generation in knife performance

Stanley FatMax's new Folding Retractable Knife combines practicality, durability and toughness in a compact frame ideal for tradesmen, DIYers, and adventure junkies.

An evolution in the iconic Stanley knife family; the blade easily retracts at the push of a button. The streamlined ergonomic design and soft grip of the retractable knife ensures comfort during heavy duty use.

Blade change can be made instantly with no tools required, with readily accessible onboard blade storage allowing for a seamless changeover.

A handyman's essential and fisherman's dream, the knife also features an integrated string cutter which can be used even when the blade is retracted.



what's hot



Daewoo white side by side fridge

The resurgence of white kitchen designs is upon us and what better to compliment this trend with Daewoo Electronics white side by side fridge/freezer. Its Nano Silver Technology ensures the freshness of your food products, promoting positive health and well-being. Its glossy exterior and sleek interior is a perfect combination of style to put in your next home or office. The range is available at your local Mitre10 Mega store. Visit www.daewoo-electronics.co.nz for more information.

Resene ColourHelper

Got an existing colour or material and need to find a similar Resene colour but you're not sure which might be closest? The new Resene ColourHelper is here to help. Simply take the Resene ColourHelper, push it down to 'read' the target colour and it will let you know the three closest Resene colours. It can also suggest complementary colour options, tell you the difference between two colours so you can see how similar, or different, they are and suggest other colours to create a colour scheme.

Available for use at Mitre 10 MEGA stores and Resene ColorShops.



Rinnai Energysaver®

The smart way to heat your home

Featuring power saving functions as well as 11 different temperature settings between 16 and 26°C, Energysaver® provide heat from modern floor level outlets.. Units can be floor mounted or against the wall. As well as being an economical to run, the Rinnai Energysaver® is perfect for people who suffer from allergies and asthma. With endorsement from the Asthma Foundation, the Rinnai Energysaver® delivers superior air quality by using external air for combustion, leaving the inside air clean and healthy.



In hot *water*

by Je t'aime Hayer

Fresh, flowing hot water from the tap is a luxury we take for granted in New Zealand, but if you can imagine being without this convenience, it's easy to understand just how valuable it is for a happy, healthy home.

While none of us would choose to be without our hot water, increasing power costs and the desire to reduce our carbon footprint means we may well be considering how we can enjoy our daily shower, while lessening our power bill and reducing our impact on the environment.

There are several different technologies to heat the water for our home, each with their pros and cons. So, if you're building, renovating, or looking to reduce your energy consumption, it makes sense to consider all the options.

"The most cost-effective way to heat your water is with a heat pump," says Jeremy Gooch, Mitre10 Category Manager Bathrooms and Plumbing. "The second most efficient water heating system is gas, followed by electricity." Unfortunately, like most energy-efficient home products that result in long-term savings, the initial cost of the system is in reverse, with the heat pump being the most expensive.



Which water heating solution is the right one for your home?

“Water usage is very dependent on the individual,” says Jeremy, who advises first figuring out what you’re trying to achieve, before considering the different systems. “There are many reasons people look at a new water heating system: better water-flow rate, less water usage, saving power, environmental issues – there is a system that suits every individual’s requirements.”

Jeremy has also encountered customers who want to increase their hot water pressure for a better shower, and are changing from a low pressure to mains pressure system, which means they’ll need to take into account how this will increase their water usage.

Electric water heating

Electric hot water cylinders are the most common form of hot water heating in New Zealand. An A-grade cylinder that was installed after 2002 will be well insulated, but older cylinders are usually poorly insulated and will



benefit from a cylinder wrap. The water can be heated during the night or day, or as it is used, with night-rate heating being the most cost efficient. If buying a new electric cylinder, look out for one with a ‘solar-ready’ tank, which can have a solar panel, heat pump water heater, or wetback connected to it in the future.

Instantaneous flow electric water heaters are energy efficient for washbasins and showers, because they heat water as it runs through the tap, eliminating heat loss from storage cylinders and hot water pipes, therefore using less energy than a storage cylinder. However, instant electric hot water systems require separate wiring for large flow-rates.

Gas/LPG water heating

There are a couple of gas options; either ‘instant’ gas hot water systems, or gas ‘storage’ systems. Instant hot water systems provide continuous hot water that is heated when you turn the hot tap on, so you only pay for what you use. There is no storage cylinder, so no ‘standing energy losses’ from keeping water in a tank



Bosch Hot Water. Delivering Peace of Mind.

Bosch has been delivering hot water to New Zealand households for over 50 years. Pioneering continuous flow water heating in the late 1800’s, Bosch has secured a name synonymous with quality and innovation that continues to drive the company today. **As a result, Bosch now offers the largest range of continuous flow gas hot water systems on the market today.**

One such product, the Bosch Highflow 25e is compact, space-saving and is easy to install. It has been designed for maximum energy efficiency and environmental protection making it a smart choice for New Zealand homes.

Call Bosch on 0800 54 33 52 or visit www.bosch.co.nz/hotwater for more information.



BOSCH
Hot Water

If you are planning to install a solar water heater or heat pump water heater, you may be eligible for ENERGYWISE funding of \$1000 or \$500.

Visit www.energywise.govt.nz to find out more.

hot; in fact, the systems can be up to 95% efficient. Look for one with automatic ignition as pilot lights use gas even when the water is not being heated. Gas hot water storage system units can go inside or outside your house. The Rinnai Infinity range comprises three products – the Infinity VT, with valve technology that delivers everyday efficiency, the Infinity HD, which offers heavy duty water heating for demanding jobs and the Infinity EF, which uses condensing technology to deliver further efficiencies and savings. Suitable for both piped natural gas and bottled LPG, the Rinnai Infinity VT ignites electronically and heats the incoming water to a digitally controlled temperature.

Solar water heating

If your home is blessed with abundant sunshine and your family uses a lot of hot water, solar water heating will be the most energy-efficient option. The initial outlay can be costly at around \$5000, but the system will pay for itself over time through dramatically lowered energy bills. Due to New Zealand's weather, you'll likely need a back-up heating system, such as Rinnai Energysaver power flued gas heaters or electric boost options, or a wetback to use during winter.

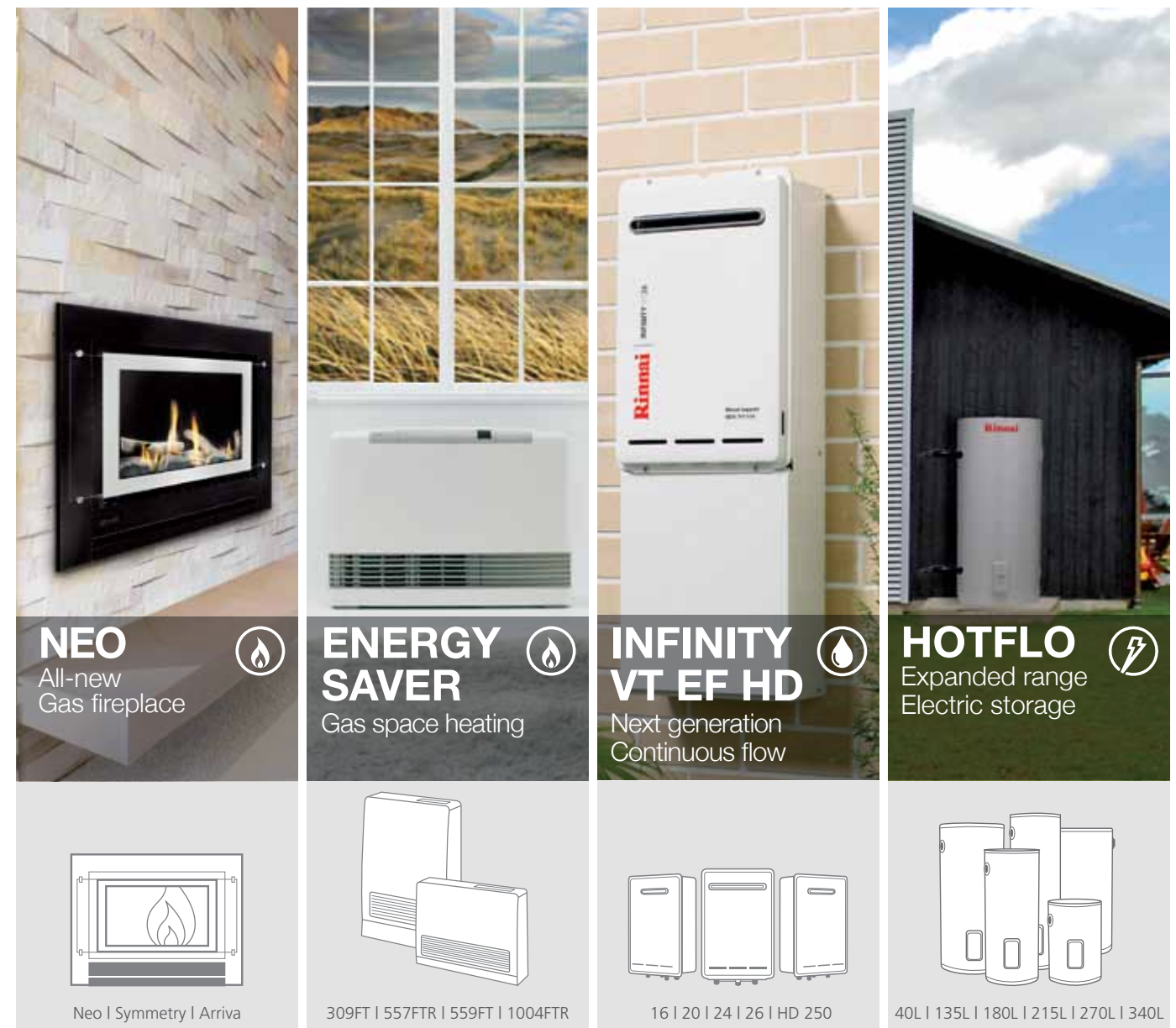
Electric heat pumps

Heat pumps are far more energy efficient than electric water heaters and in one Dunedin study, a heat pump hot water system produced nearly 2.5 times more heat than direct electric heating – saving 60% of the electricity! However, because they draw heat from the outside air, they are less efficient in winter when the temperature is lower. If you're considering an electric heat pump, ask suppliers for the heat output figures at an external air temperature of 2°C – the higher the figure the better. If you currently use 4500kWh per year to heat water, you can expect the heat pump to save you around \$500 per year (at 18 cents per kWh).

Wetbacks

Put simply, a wetback is a pipe arrangement that fits in the back of the firebox. It uses some of the heat from the fire to heat water, which is convenient, but does have the drawback of providing less heat to the room. Many wood or pellet fires, ranges or burner systems can have wetbacks fitted to them, so if you have a wood burner and a good source of untreated wood, a wetback can be useful in winter and as a complement to solar water heaters.

Innovative room and water heating products designed for contemporary kiwi homes.



Rinnai offers a complete range of high performance appliance solutions that are contemporary, innovative and energy-efficient. Our quality products are made for New Zealand conditions and designed to be better on our environment.

Whatever your needs may be, we've got an addition that will fit right at home, in any home.

For more information on our full range of products
Phone **0800 TO RINNAI (0800 86 746 624)**
or visit www.rinnai.co.nz

Rinnai
EXPERIENCE OUR INNOVATION



How To: Create efficiencies in your current system

If a new system isn't on the cards, it's still possible to make a decent dent in your power bill by reducing your hot water heating costs. Heating water accounts for approximately 30% of our energy bills, so it pays (literally!) to ensure that you're not using more energy than you need.

Simple ways to create significant savings on your water heating.

Adjust temperature

Ensure you have a tempering valve in your plumbing system that reduces the hot water temperature in your kitchen and bathroom to 55°C at the tap. It will need to be kept at 60°C in the cylinder to prevent the growth of Legionella bacteria. An electrician or plumber may be required to adjust your thermostat or install a tempering valve.

Reduce water usage

Install flow restrictors on your tapware. They cost between \$10 and \$30 but can actually halve the volume of water used, while maintaining good water pressure. Some modern tapware even has an adjustment in the handle mechanism that allows you to restrict the flow. If you're replacing your existing tapware, Jeremy advises choosing your new range based on its WELS (Water Efficient Labelling Scheme) rating – the more stars, the more water efficient.



Because showers are responsible for around 80% of a home's hot water, installing flow-regulated shower heads can cut around a quarter of your hot water usage, saving you money on your energy bill and cutting greenhouse gas emissions from your household energy consumption by around 400 kg a year. Most efficient showerheads can be retrofitted, so look for one that has a flow rate of nine litres a minute or less.

Investigate heat loss

Install a hot water cylinder wrap. This will insulate the cylinder and retain more heat. Modern electric cylinders have a high level of insulation, so standing heat loss is relatively low, but older cylinders that are not as well insulated benefit from a cylinder wrap. At a cost of between \$70 and \$90, it pays for itself in energy savings in about a year. Hot water cylinders pipes are usually not insulated and lose a lot of energy. You can buy foam tube pipe insulation to help reduce heat loss from these.

Renovate your spouting for a new look...



Request our easy installation guide from www.marley.co.nz



Marley spouting and downpipe systems have clean lines and a smart finish that will enhance the look of your home. Manufactured here in New Zealand for over 35 years, our spouting won't rust, rot or corrode, is UV stabilised and has a 15 year guarantee. Choose from a range of profiles for the look that suits your home.



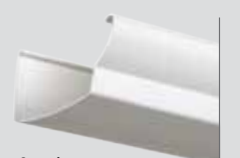
Stormcloud



Typhoon



Classic



Ovation



FL2

Don't forget the downpipes!

FPS .CO.NZ
FUTURE-PROOF BUILDING

www.marley.co.nz

Available at leading building and plumbing merchants nationwide.

an **OAliaxis** company

For more information: **0800 MARLEY (0800 627 539)**

MARLEY



Tapware

Changing your tapware can have a huge impact on both the appearance and functionality of your kitchen. Replacing your outdated taps with a single mixer is a popular choice but remember you may also need to update your sink. Modern tapware extends from the traditional right through to modern chic. You might also want to consider additional options, such as a vegetable sprayer on a flexible hose. This can be a useful addition, as well as making the room more stylish.

If you regularly have large pots and pans in your sink, consider getting a spout that arches out and above so you can work comfortably.

Handles

One of the most simple, budget-conscious and effective ways of creating a change in your kitchen is to change the door handles and drawer pulls. By simply removing your existing handles and replacing them with something different, you can alter the appearance of your kitchen. For example, replacing wooden handles with satin metal ones can quickly add an edgy modern flavour.

The Sylvan range of handles covers almost everything imaginable and will almost certainly have an offering to suit the style you have in mind. Because of the positioning of the mounting holes for knobs and handles, replace like with like and take measurements to avoid unsightly holes.

Kitchen *chic* by Scott Wilson

The kitchen can be the hub of the family home, or the coolest place to hang out at a party; you want it to look good and be functional. If your current cooking spot is looking like one of Gordon Ramsey's worst nightmares, maybe it's time for a revamp. There's lots you can do, depending on your budget. If you want to start small, check out your taps.

Foreno®
Watermark Certified Tapmakers

Pick up your free copy of the LATEST edition of Foreno's **UNPLUGGED** Magazine in store...



With **MORE** products, **DESIGN TIPS** & the latest on the new Water Efficiency Labelling scheme



www.foreno.co.nz

Quality
Health
Innovation

Foreno®
Watermark Certified Tapmakers



Sink

In many cases, considering new taps will also raise the idea of putting in a new sink. Without too much work for a skilled DIYer or tradesperson, it's possible to remove the old sink from your countertop and fit a new one. Options include double sinks, a draying rack and more. Before you start ripping out your old basin, think carefully about where you want to place it relative to your current fixings, then measure even more carefully to ensure it'll fit.

Remember that you will likely need some plumbing assistance for the feed to the taps and for the drainage pipes. You'll also need to consider the finish – everything from stainless steel right through to ceramic is available.

Floor coverings

What you put on your floor will have a big effect on the way your kitchen looks and feels. You will often spend a considerable amount of time on your feet in your kitchen, so you want it to be a comfortable place to work. Vinyl, tiles, timber laminate or polished concrete are among the options available.

Polished or coloured concrete is a strong style statement and suits modern houses of a complementary design. In more traditional homes, timber laminate can add a real sense of warmth.

Tiles are a popular and flexible choice due to the large range of sizes and colours available, allowing you to go for an understated look or something that makes a really strong impact.

Consider laying underfloor heating under the tiles to prevent that 'shock' factor when wandering barefoot into your kitchen to make your morning cup of coffee.

The advantage of a rug or throw is that it can be taken away for cleaning. If you have a tiled or vinyl floor, make sure you select a rug with a non-slip underside to prevent people skidding over.

Re-facing your cabinets

Now here's a way of giving the appearance of a brand-new kitchen without going to the expense of a full replacement. Because of the environment, kitchen



cabinets come in for a hard time, especially if you have young children. Re-painting or re-facing your existing cabinetry is a great way to get a fresh look.

If you have timber doors and drawer fronts, there are a couple of options. First, you can look at painting them in something bold and striking, or prepare the surface and stain them for a more rustic look. Alternatively, get new door and drawer fronts made and fit them to your existing cabinets.

Because the colour range and surface finish options are so vast, you can totally transform your kitchen into something entirely new without ever having made it impractical to use during the process.

Bench top

A bench top creates a large single surface and making a change can have a large effect in both appearance and functionality.

Like almost everything in your kitchen, you will be faced with all sorts of choices; everything from laminates to composite materials to solid stone.

If you are thinking about a new bench top, complete the picture with a new sink and tapware.

If replacing your bench top is something you're going to consider, get the experts in to measure the top properly and manufacture it to the exact dimensions you'll need and have them install it properly.

Splash back

This is an element that has a major impact on the kitchen and can be overlooked. The area of wall between your bench top and the ceiling takes a lot of punishment; glass or tiles are usually applied to protect it.

Use this as an opportunity to add colour, flair and a little of your own personal style. This area will stand out. It will need to tie in with the other finishes but it is an opportunity to make a statement.

Appliances

New appliances may seem like a huge outlay but the pay-off can be quite substantial, especially if your existing appliances are aging and not performing as well as they could be. Take your oven, for example. If yours is old and temperamental, fitting a new Classique model is going to make a huge difference to the functionality of your kitchen as well as the efficiency of power usage.

Classique ovens are available as wall-mounted or free-standing and also have the option of gas-fired hobs, which can make cooking a more enjoyable experience. If you often find yourself struggling for oven space, think about a double oven, so you can cook for the masses.

You also need a range hood to remove all those cooking smells and steam from your cook top.

Look at your fridge, as well, as old fridges are inefficient and energy-hungry. A new Daewoo fridge is going to perform better, look better and have a positive impact on your power bill.

Think about fitting a waste disposal, or a hot/cold filtered water dispenser to your sink. Neither are necessities but they add value to any kitchen.

Re-seal silicone

More of a maintenance task than anything, but removing and replacing silicone around wet areas can actually go a long way to keeping your kitchen looking good. Silicone that is breaking down and getting old doesn't just look shabby, there's a good chance it's not doing its job either and may be letting moisture in.

Replacing the old sealant will look better and it will also create a far better moisture barrier, helping to prevent any water damage to cabinets or bench tops. Selleys has a wide range of products available in its range, so you should be able to find one that works perfectly for you. Before applying, ensure all the old sealant has been removed. Selleys has a product designed specifically for this task, too.

Everything you need to achieve your desired kitchen is available at M10, so go along and discuss your options with one of the knowledgeable staff in your local store.



Touching Tomorrow Refrigeration



Promote a healthy food storage environment!

One of Korea's big three in home appliances. Daewoo Electronics presents a range of fridge & freezers with Nano Silver technology that eliminates odour to ensure the freshness of food and ultimately your health. So put Daewoo's innovative technology to work in your home. The range is available at your local Mitre10 Mega store.

Other Daewoo Products:



Washing Machines

Heat Pumps

DAEWOO 
ELECTRONICS

MITRE 10
MEGA
Home Improvement Warehouse

www.daewoo-electronics.co.nz

Classique

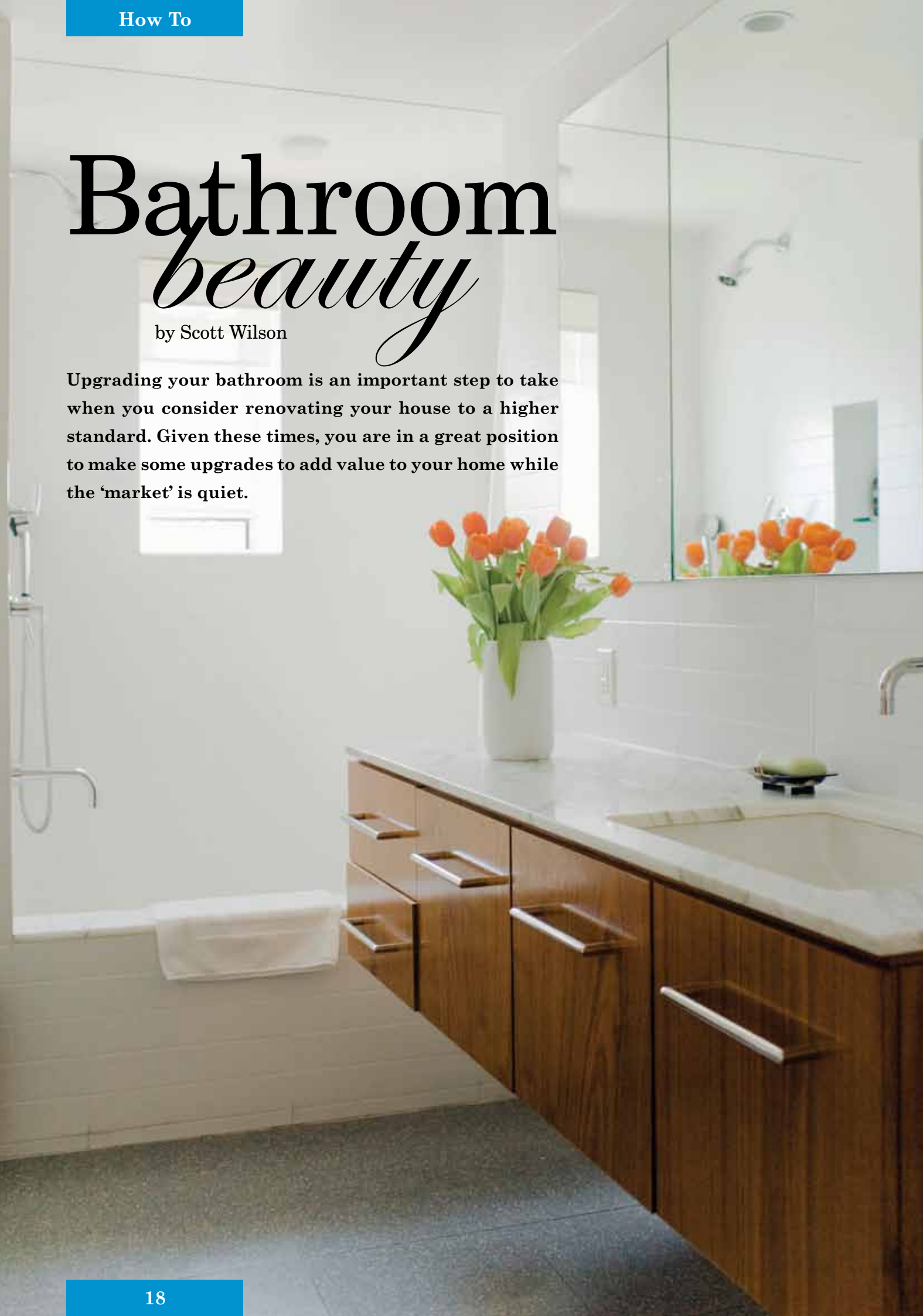
classique.co.nz

Freestanding & Wall Ovens | Gas, Ceramic & Induction Cooktops
Rangehoods | Dishwashers | Refrigeration | Microwaves | Laundry

Bathroom *beauty*

by Scott Wilson

Upgrading your bathroom is an important step to take when you consider renovating your house to a higher standard. Given these times, you are in a great position to make some upgrades to add value to your home while the 'market' is quiet.



Here's a How To guide to help you beautify your bathroom:

Tapware

A change in tapware can make a massive improvement, not just in style, but also in performance. In contrast to the kitchen, your bathroom offers far more opportunities to get adventurous with tapware – in the vanity, the bath and the shower.

Single mixer taps on your vanity are a great way of improving performance. No longer do you have to worry about the hot getting too hot when washing your hands! However, you need to make sure you have a vanity that is able to cater for a single mixer tap. If you're planning on a straight swap from two taps to a single mixer, you'll be left with an extra hole in your vanity and will need to add a new top.

Foreno[®]
Watermark Certified Tapmakers

Pick up your free copy of the LATEST edition of Foreno's **UNPLUGGED** Magazine in store...



With **MORE** products, **DESIGN TIPS** & the latest on the new Water Efficiency Labelling scheme



www.foreno.co.nz

Quality
Health
Innovation

Foreno[®]
Watermark Certified Tapmakers



In your bath, you also have the option of swapping from two taps to a single mixer but, once again, you'll need to look at what options you have available here. If the taps 'sprout' from the edge of your bath, you'll need to replace the bath. If they come out from the wall, a bit of creative work by a plumber will be able to rectify the situation (although you will need to do some patching or re-tiling to finish the job off).

A second option in your bath is to have the spout at one end, with a mixer handle mounted on the wall alongside the bath so you can adjust it as you are laying back enjoying your soak. If you do like this as an option, you will again require the service of a plumber may need building consent to move the plumbing fixtures. Check with your local council or authority if you are concerned about this.

Finally, the shower is an area where many of us spend a lot of time. This is one bathroom zone where a tap/shower head upgrade is a real boon! Dispose of that aging shower head and install something with more style, panache and performance – something that will allow you to stand under the shower and relax rather than searching for that pitiful dribble. Your options here are numerous, with showerheads that do everything from

sprinkle water right through to misting, pulsing and even massaging.

The addition of a sliding, removable shower head also allows it to be adjusted for all heights as well as being easier to give yourself a full body rinse. Make sure you have one that's right for your water system, depending on whether you are on mains pressure or not. Talk to a staff member at Mitre 10 to make sure you've got one that's right for you.

Vanity

The installation of a new vanity can greatly lift the style of your bathroom, as well as offering further advantages such as increased storage. Although not a major renovation job, you will need to ensure you have the necessary skills – and perhaps access to a tradesperson. You will have to remove your old vanity and then either patch what needs repairing or install the new unit over the removal zone.

You'll also need to be able to install new tapware as well as disconnecting and reconnecting the drain. In most cases, you're unlikely to get away with a straight swap and there will be some remedial pipe work needed to get the job done right.

Say goodbye to bathroom steam forever by simply installing a

shower dome™

No Steam - ever again.

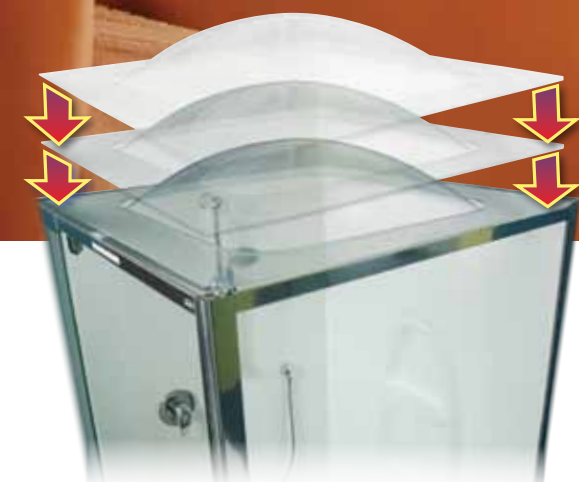
Eliminate bathroom steam, mould and mildew with **Showerdome**.

Simply fit a **Showerdome** to your existing shower and you will save on power, water heating costs, cleaning and have a drier healthier home.

Ph: 0800 541 2233

For more information visit our website

showerdome.co.nz



ONLY
\$276.00
plus installation

*...better get a
Showerdome!*



WIN WITH SHOWERDOME

And say goodbye to shower steam forever!

Want a healthier, drier home?

Independent tests by Waikato University show that Showerdome is effective at eliminating bathroom steam forever. Making your home warmer, drier, healthier, and cheaper, as a condensation free bathroom reduces your maintenance costs.

A clear acrylic shower top fits most modern shower units – and Projects HOW TO magazine has two of them **worth over \$400 each to giveaway!** Each winner will receive a fully installed Showerdome, ready to get to work immediately on eliminating that bathroom steam!

For more information or your nearest agent visit www.showerdome.co.nz

**TWO TO
BE WON
\$400 each**

HOW TO ENTER THE DRAW

Go online to www.nzprojects.co.nz and click on 'Competitions' to submit your entry or send your name, physical address, daytime phone number and email address on the back of an envelope to: Projects HOW TO – Showerdome Competition, 15 Berne Place, Birkenhead, Auckland 0626 before 30 June 2011.

You must include the missing words in this phrase:

Say goodbye to shower _ _ _ _ _ forever!

CONDITIONS OF ENTRY:

You may enter only once. There are 2 prizes as outlined. Each winner will receive one installed Showerdome. The prizes are non-refundable, non-transferable or redeemable for cash. The winners will be notified by phone or email by 31 July 2011. Employees of MMS Publishing, Showerdome and their immediate families and agencies are not eligible to enter. All entrants with a valid email address will be notified of the winners of this competition. Prices quoted in this promotion were accurate recommended retail prices at time of publication. Projects HOW TO and Showerdome accept no responsibility for any loss or damage incurred from the use of these products.



When considering vanities, look at what you need. There are units to suit almost every style and budget. Some are freestanding on legs, while some run right to the floor. Some have moulded acrylic tops, while others have more exotic options such as glass sinks along with all sorts of finishing choices.

Shower and bath

If you're looking at a more 'involved' upgrade, your shower and bath are two vital components. They are likely to have a huge impact on the appearance and performance of your bathroom, so keep in mind that this is quite a major renovation project. Make sure you have the time, money and access to the required skills to get it done right.

Like vanities, there are all types of baths and showers available. Baths can be installed as standard or designed as corner baths; some with 'spa bath' functions, so you can lie back and enjoy the bubbles. They even come in different depths, with large, deep baths available for those with more luxurious taste.

Aerlite Bathroom Ventilation

Shower Vent and Light

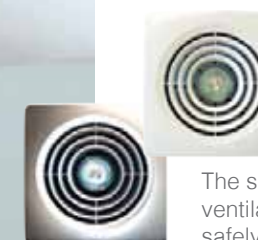
Stylish design providing high efficiency ventilation and spot lighting

The sleek Aerlite Shower Vent and Light provides high efficiency ventilation suitable for any bathroom. This ceiling fan with light can be safely mounted directly over the bath or shower to remove steam and reduce condensation on your mirrors, windows and walls. White & Silver fascias are both included giving you the option to match your preferred style.

Heat-Fan-Light 4

Designer bathroom systems providing instant heating, lighting and ventilation

The stylish Aerlite Heat-Fan-Light 4 is a complete heat, fan, light unit designed to give independent control of your bathroom ventilation, instant heat and lighting requirements. Easy installation and a low overall height means the unit can also be fitted between floors. Aerlite Heat-Fan-Light 2 is also available.



Aerlite Bathroom Ventilation
Aerlite Home Ventilation
Aerlite Heat Transfer

AERLITE
Your first step in creating a healthier, drier home for you and your family.

Check out the complete Aerlite range exclusive to Mitre10 & Mitre10 MEGA

Showers have even more varieties available, from curved corner showers to standalone glass-walled models. Alternatively, tiled wet areas can be built in as part of the bathroom construction. It all depends on taste, budget and functionality, but you can certainly find what you need in the Mitre 10 bathroom department.

Ventilation

Heat and steam is a natural by-product of hot water in a bathroom and it can play havoc with the paintwork and finish, not to mention the extreme annoyance of trying to use a mirror when it's misted over.

There are two ways of getting around this – either preventing the steam occurring in the first place, or drawing it out of your bathroom and expelling it externally.

Preventing the steam occurring can be achieved by having a dome fitted to the top of your shower. This works by preventing the hot, moist air in the shower mixing with cold air outside – which causes the steam – and really does do an outstanding job.

The second option is by installing something like an Aerlite extraction fan or combination fan/light/heat unit. These will need a hole cut in the ceiling and then vented to the outside of the house, usually through the soffit. It will also need to be wired in by a registered electrician, but the benefits are huge. The fan unit will draw the steam off, keeping your bathroom clear and moisture-free, while the combination unit is fitted with a light bulb as well as heat bulbs. There's little that can beat climbing out of the shower and standing under a heat lamp as you get dry. Bliss!

Flooring

Because of the environment, you can be a little limited when it comes to your choice of flooring for a bathroom. Carpet will quickly deteriorate, while laminated timber flooring (and its derivatives) can suffer quickly by soaking up the moisture and bulging or bowing.

Unless you are going for a polished concrete floor (which normally requires careful planning from the construction stages of your home), you are really only left with two options – tiles or vinyl.



WATERPROOF in just 2 hours*
5 YEAR mould resistant guarantee#

Selleys, leading the market to deliver what consumers want:

- Waterproof, fast
- Mould resistance guarantee#
- Formulated to resist lifting
- Neutral cure
- 100% Silicone, 25 year guarantee**

* Sealant will form a firm skin to be waterproof and shower-ready only 2 hours after application. The semi-cured sealant must not be touched until fully cured (48 hours). # Sealant must be cleaned regularly to avoid build-up of soap scum.
 ** 25 YEAR GUARANTEE This product is guaranteed against crumbling, cracking or drying when used as directed, for private use, and within 12 months of purchase.

For more information visit www.selleys.co.nz or telephone 0800 SELLEYS

SELLEYS
 IF IT'S SELLEYS IT WORKS

**IF IT'S NOT
GIB AQUALINE®
YOU COULD
BE FACING
A MOISTURE
PROBLEM.**

Without the GIB Aqualine® water resistant core containing special polymers to help prevent moisture penetration, wet area linings can become a sponge. That's why more builders use GIB Aqualine® to protect walls and ceilings in bathrooms, laundries and kitchens than any other lining*.

The performance of GIB Aqualine® is independently verified by BRANZ Appraisal†, making it your best insurance against future liability and expensive call-backs.

FOR CEILINGS TOO.

Using GIB Aqualine® on ceilings as well as walls will help prevent the damage condensation can cause to linings and the framing behind.

THE MOST PREFERRED TILING SUBSTRATE.

Over 70% of the New Zealand building industry uses GIB Aqualine® as a tiling substrate in bathrooms.*

- The fibreglass in the core gives added strength that easily supports the weight of tiles to provide a solid, stable backing.
- Outstanding dimensional stability means it presents an even, flat surface for tiles to adhere to.



Watch the short video at gib.co.nz/aqualine

FOR MORE INFORMATION, CALL THE
GIB® HELPLINE ON 0800 100 442.

NB: for all installation requirements refer to the GIB Aqualine® 2007 wet area systems literature.

*Winstone Wallboards Trade Survey April 2010. † GIB Aqualine® Wet Area Systems BRANZ Appraisal Certificate No.427 (2007)



Tiles used to be the more pricey option but they have come down vastly in price, making them an alternative even for those on a tight budget. They come in a huge range of sizes, colours and finishes and can be used as something understatedly or as a bold feature. They can also be installed by a competent DIYer, as long as he or she is prepared to complete the necessary preparation work first.

A further advantage is that tiles can be used throughout the bathroom – not just on the floor. Consider also putting a single course of tiles around the room at the base of the wall, tiling halfway up the wall to create a feature, or, if you are feeling like a real change, tiling the full height of the wall to give a really bold and luxurious appearance.

Vinyl, on the other hand, requires a tradesperson to install but it can provide further design options. Vinyl is available in all sorts of finishes from faux tiles through to a timber floor design or one of a vast range of patterns and colours to suit your bathroom's décor.



Accessories

The finishing touches to your bathroom upgrade can really put the icing on the job. Fitting shelves inside your shower, matching soap dispensers, toothbrush holders and colour coordinated towels and flannels can complete the job. Other items, such as heated towel rails can also be beneficial to your bathroom in terms of comfort and at a small cost to your power bill.

If you're planning a decent bathroom upgrade, add a little more to your budget and keep it to one side so at the end you can finish off the job properly and add a touch of luxury to a room that deserves it.



Laying it down

by Shaun Evans

In part one of our series on concrete in the May issue of How To magazine, we looked at the component parts of concrete, how to establish your required quantities, the tools you need and how to prepare your site. This month we look at the next steps in putting down a great concrete slab and some projects you can get stuck into around the home.

- Hammer and mallet.
- Handsaw.
- Shovel and rake.
- Builder's tape measure.
- Wheelbarrow.
- Spirit level.
- Concrete trowel

Mixing

There are two types of mixing techniques you can use, either by hand or by using a concrete mixer. Concrete mixers can be purchased and if you intend on working on more than one project using concrete over time, then it may pay to invest in this labour-saving machine. However, for small projects, mixing by hand is perfectly acceptable.

Hand mixing

If you need to mix a small amount of concrete, this is a perfect technique and not too difficult. Rustle up a shovel and a couple of buckets, plus a hose and a hard surface on which to work. Measure out the sand and the gravel into a heap on your hard surface and make a crater in the centre of the heap. Into the crater, add your cement and then turn the whole pile with your spade until the colour becomes uniform.

Once you have completed this, make another crate in this mixed pile and add water. Begin to turn the material into the centre from the edge of the pile and keep adding water as required. The mixture is ready when it's neither too crumbly nor sloppy; it needs to be pliable and easy to work.

Run the back of your shovel firmly across the mix to test it and ensure the mark left by your shovel holds and the surface of the mix is uniform and not showing an excess of cement and water.

Machine mixing

To ensure the accuracy and consistency of your mix, measure all of your materials out in containers as per the Golden Bay cement table on following page.

Follow these How To steps for best results:

1. Turn on the mixer, ensuring you are using a residual current device or isolating transformer, as you will be using water.
2. Flush the inside of the concrete mixer with clean water – this will remove any particles from previous use – then drain.
3. Place approximately half the measured water into the mixer.
4. Then place 75% of the measured aggregate into the mixer.
5. Place all of the measured cement into the mixer.
6. Place the remaining aggregate into the mixer.
7. Allow the mixture to turn for two or three minutes, while you slowly add the remaining water.
8. Keep an eye on the consistency of the mix as you add this water and stop to check if the consistency is firm, but quite plastic.
9. Once you have your desired consistency, note the amount of water used as a guide for the next batch.



Please note that there were errors in this table when published in the May issue and due to this we are re- publishing this guide correctly.

Use this table of different concrete mixes, supplied by Golden Bay cement, for your DIY projects:

Never mix more concrete than you can place in half an hour.

Use	Mix your own: Proportions (volume)	Bulk amount per m3 of compacted concrete	Yield per bag of cement	Mix quantities for 50 litre mixer
General: footpaths, mowing strips, etc	Cement 1	6 Bags	0.165m3	12kg 1 bucket*
	Sand 4	0.70m3		35 ltrs 4 buckets
	and 0.70m3			35 ltrs 4 buckets
	20mm aggregate 4	1.25m3		65 ltrs 7 buckets
	or Builder's mix 7			7.5 ltrs added water
Paving: driveways, paths, etc	Cement 1	7.5 Bags	0.135m3	15kg 1 bucket*
	Sand 3	0.65m3		35 ltrs 4 buckets
	and 0.70m3			35 ltrs 4 buckets
	20mm aggregate 3.5	1.20m3		60 ltrs 7.5 buckets
	or Builder's mix 5.5			7.5 ltrs added water
Bedding: fence posts, clothes lines, etc	Cement 1	7.5 Bags	0.200m3	10kg 1 bucket*
	Sand 4.5	0.65m3		35 ltrs 4 buckets
	and 0.70m3			35 ltrs 4 buckets
	20mm aggregate 4.5	1.20m3		65 ltrs 7 buckets
	or Builder's mix 8.5			7.5 ltrs added water

* Based on a 9 litre bucket of water.



Check that rain is not forecast, as this will damage the concrete slab and make it very difficult to repair.

Laying concrete

As per the previous instructions in the May issue of How To magazine, you will have all your groundwork in place, including your boxing, formwork and reinforcing.

Slightly dampen the ground where you are to place your concrete, as this will prevent puddles forming. Now spread your mixture evenly between the forms and rake smooth to a level 15mm above the finished height you desire. Make sure the concrete gets into all the corners and tap the form with your shovel to force out any air bubble or cavities.

Now it is time to screed the slab and although there are tools available at Mitre 10, for a one-off project about 1.5m, a length of 50mm thick timber on edge will do the job. Shuffling the beam from side to side and slowly forward using the form as a guide will level the concrete. Look out for low spots in the concrete. Re-spread the mix and repeat this process.

Finishing concrete

Now that you have a reasonably smooth concrete layer with a slightly rippled surface, you may want to add texture to avoid any slip issues in the future. To do this, you can simply draw a stiff garden broom evenly across the surface of the concrete while it is still wet or use a softer broom for a finer finish.

Look out for bleed water! This will normally dry up on its own through evaporation, however. if you drag your broom through the water. you will end up with a dusty surface when the concrete hardens.



Sand and aggregate contain some water and the amount of water added to the mix is based on an average. In wet weather you may need up to four litres less water and in particularly dry or hot conditions you may need up to two litres more water. If the builder's mix is poorly graded, it may be necessary to increase the amount of cement, so for each additional bucket of cement the amount of increased water required may be up to three litres.

Expose your aggregate for a great concrete finish

Sika takes the guess work out of getting it right



Rugasol® C
Concrete Surface Retarder
for spray application to the
surface of freshly laid concrete.

Provides a decorative, economical, non-slip surface for:

- Driveways, footpaths and patios
- Pool surrounds and forecourts

Innovation & Consistency | since 1910

Use a steel float to achieve a smooth finish if that’s what you’re after, but be mindful that if it is an outdoor path, you may create a dangerous, slippery surface.

Exposed aggregate concrete

You can expose the aggregate to create a unique finish. Removing the top skin of the mortar before the slab dries achieves this look. Brush the slab whilst using a fine mist setting on the hose to wash away the fine material to expose the aggregate – try it on a small section first to make sure you have the technique correct.

You may also want to add coloured aggregate to the top layer of the still-wet concrete mix. Use your float to make sure the surface is even, then leave it for a while until the concrete hardens further and then apply the broom and fine mist technique.

To help with exposing aggregate, use Rugasol C from Sika immediately after the initial bleed water has disappeared from the concrete and before setting has commenced. Apply it to the surface using a garden sprayer to achieve uniform coverage.

Rugasol C will retard the set of the top surface layer of concrete to a depth of approximately 3 mm - 6 mm. It is essential that the soft cement surface be removed before this retardation period has expired, otherwise the surface will be difficult to remove.

In order to achieve the desired exposed aggregate finish, it is essential that you monitor the concrete to determine when the soft surface layer of cement should be removed.

The length of the retardation period will vary depending on the cement content of the concrete, ambient air temperature, the amount of Rugasol C applied and the time it is left on the surface before removal.



This surface layer should be removed using a hose or low-pressure water-blaster and a soft broom, until a good clean exposed aggregate finish is revealed.

Curing concrete

Concrete needs to be cured – it is an essential part of ensuring the finished surface lasts and is strong. As soon as the concrete has dried to a point where it is hard enough not to be marked, it is time to help the concrete cure.

Curing should be carried out for seven days by spraying water on the surface to keep it continually moist. The addition of a curing compound like Sika Antisol, sprayed directly onto newly laid concrete, will not affect the normal setting action of the concrete; a thin film barrier is formed to slow down the rate at which water evaporates from the concrete surface during the first few crucial days of curing.

Curing compounds will assist in:

- Reduction of shrinkage and cracking.
- Improved strength and durability.
- Reduction in surface dusting.
- Increased abrasion resistance.
- Reduction in the permeability of the concrete.

This enables more water to be available for the hydration of the cement. The concrete can then cure more efficiently, eliminating the need for curing methods such as wet hessian, polythene sheeting and continuous watering.

Visit your local Mitre 10 store and talk to the team about your next concrete project – you will get all the help you require. With the great products available from Golden Bay cement and Sika, your concreting career is only just beginning.

SAVE 24%

SUBSCRIBE & SAVE

Batten down the hatches, winter is on its way. But that’s no reason to hibernate and forget about DIY. There are plenty of things to be getting on with and a subscription to Projects HOW TO is the perfect way to sort out all those jobs.

SUBSCRIBERS ENJOY:

- Home delivery every month of the latest issue full of HOW TO:
- A magazine full of home renovation inspiration and practical know-how
- Just \$49 for one year (11 issue) subscription
- Save 24% off the retail price

IT’S EASY TO SUBSCRIBE:

Phone/Fax: +64 9 575 7870
Freephone: 0800 624 700
Email: enquires@demags.co.nz

Or, post the form to:
Complete subscriptions Limited,
FREEPOST 167004, PO Box 125115,
St Heliers, Auckland 1740



dream a little

YOU CAN SUBSCRIBE TO PROJECTS USING YOUR FLYBUYS POINTS - simply go to: www.flybuys.co.nz and type ‘Projects’ in the search box to order a 1 year subscription. Just 230 points.

PROJECTS Office use - code: June 2011

I’d like to take out a ☐ one year subscription \$49.00

BILL PAYERS Name:

Postal address:

Suburb: Town/City: Postcode:

Phone number: Email:

Enclosed is my cheque ☐ made payable to Complete Subscriptions OR charge my card ☐

VISA ☐ Mastercard ☐ AMEX ☐

Total amount to be charged to credit card:

Card number: Expiry date:

Cardholders name:

Signature:

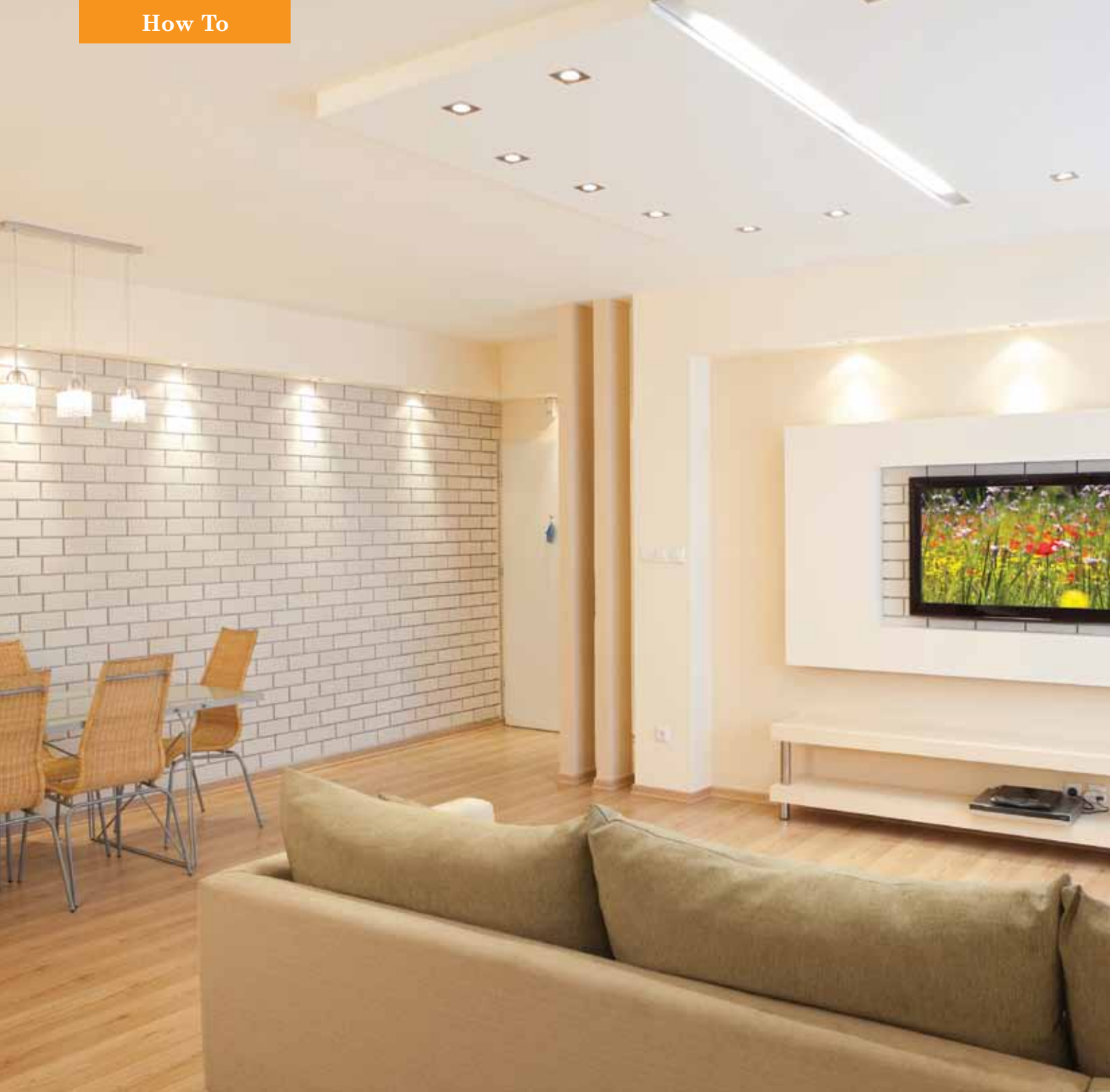
RECIPIENT Name:

Postal address:

Suburb: Town/City: Postcode:

Phone number: Email:

Message:



Light *fantastic*

by Shaun Evans

A good lighting plan helps you set out what type of lighting you require and where that lighting needs to go. The practical function of lighting will vary from room to room. For example, the kitchen will require light to enable you to see while cooking, as well as providing a visual effect. How To magazine has put together this guide to lighting to help you illuminate your home, both aesthetically and practically.



There are a few terms to understand that will help you when putting together your lighting plan, starting with effects that can be broken down into three distinct categories:

Task lighting will provide light to help you complete tasks, focused onto areas where you perform household duties. The new range of task lamps from Orbit includes contemporary designs and energy efficiency combined with functionality and performance.

Ambient lighting, or background lighting, enables you to provide a room with a light that is even. This effect can be thought of as the canvas upon which other light combinations can be used. Shadows can be diffused with ambient light, giving your room a sense of even light coverage.

Accent lighting is where you can play with your lighting plan to highlight colours, walls or areas of interest. Have some fun with this part, as you will be surprised what a well-placed accent light can do for a room.

To achieve these effects, it is important to utilize the distribution of light. You can do this by choosing the type of light fixture, light bulb and placement of the light to best enhance the area. Light distribution can be thought of as follows:



Omni-directional – light that is dispersed in all directions simultaneously.

Semi-directional – light mainly focused in one direction, with a small amount diffused in other directions.

Directional – light focused in a beam on one spot with no diffusion.

Style of lighting is our next stop, and it is where the market of light fittings is illuminated for you. As mentioned, the sheer volume and variety of products on the market can be overwhelming. However, sticking with a reputable retailer and keeping the effect you wish to achieve in mind will help you to keep focused. So here we go with some broad categories and descriptions to help you put the choices in perspective:

Recessed down lights are perfect for your ambient lighting effect, providing well-distributed light over horizontal surfaces. You can look at these as your starting point for most rooms in your home.

Up lighting will provide you with an ambient light that is dispersed towards the ceiling from wall-mounted fittings or free standing.



Wall washing is the term used to describe accent lighting coming from the ceiling and focused on the wall. Typically this type of effect is used to highlight feature walls, bookshelves, artwork and even fireplaces.

Spot lighting is again accent lighting narrowly focused on a particular part of your home; ideal for those areas where tasks are to be carried out and good illumination is required.

Recessed strip lighting combines the effects of fluorescent lighting with the secrecy of placing the lighting source behind furniture, under shelving or in pelmets in the ceiling. Using this technique will allow you to have dramatic accent lighting on areas where tasks are performed.

Chandeliers provide elegance and an air of grace to any home. The traditional chandelier is made of crystal however more cost-effective materials can provide the desired effect.

Lamps are an effective and personal addition to any room. From bedside or table lamps, through to floor stands and desk lamps, the effect created can provide warmth and an aesthetic touch. The new Deco range from Orbit

paints, flocking and satin fabrics, while maintaining an affordable price, there is something for everyone.

Track or wire systems are extremely useful when there are issues with existing wiring access, or if you wish to make a dramatic accent lighting statement.

Dimmers can add a range of dimensions to your lighting plan by varying the amount of light emitted from the source. Always worth considering where a dimmer unit might be of use.

Whether you are wiring a new build or retro-fitting your existing home, there are some limitations to the work you can realistically carry out yourself. Replacing switches, socket outlets, lamp holders, ceiling roses and repairing light fittings is within the scope of a competent DIY enthusiast. As are the following jobs:

- Moving, repairing or replacing flexible cords connected to permanently connected outlets.
- Disconnecting and reconnecting permanently wired appliances.
- Moving switches, sockets and lighting outlets, but only if they are wired with tough plastic-sheathed cables.
- Installing, extending, or altering any cables, except the main cables that come from the street to your switchboard.

Remember in all these cases there are some important safety issues to take into account and it is worth mentioning them. Make sure you have the necessary knowledge and skills before you start. Please ensure the power is switched off at the mains switch and be vigilant that you are not anywhere near terminals that are live or could become live.

There are training providers that run courses for people wanting to do their own electrical work at home. Any work you wish to do yourself should appear in the list above. If not, you will have to contact a licensed electrician for their expertise.

Orbit lighting presents a contemporary design, super efficient, 1-watt desk lamp.



Energy efficiency

Approximately 10% of the electricity bill of an average home, will be for lighting purposes. Why not look at the alternatives on the market to save you money and reduce your carbon footprint.

A regular incandescent light bulb will produce 5% light and 95% heat as opposed to an energy-saving bulb (CFLs), which produces next to no heat at all. Combined with this you can fit CFLs into the majority of light sockets and they will last a whopping ten years at three hours use a day. As with all advancements in technology, CFLs are now available in a range of whites to suit your home; cool “bluish” white for the kitchen and bathroom, warm white for the living room and cool white.

Another alternative on the market are light emitting diodes (LEDs); essentially a diode that emits light when an electrical current passes through it. LEDs have revolutionised the lighting world and are available in a range of colours, dictated by the semiconductor material used in their manufacture. Colours available include red, orange, amber, yellow, green, blue and white.

Using an Orbit George desk lamp is an excellent example of lighting efficiency. The George is a lightweight model with a 1-watt LED globe included. Not only will you have ample light for your workspace, but also you will be using next to no power at all.

If you thought CFLs were long lasting, get ready for an LED light that will not need replacing for many years. Moving house may include taking your lighting with you.

It's worth mentioning that natural light is a free source and can provide your home with just the right look. A well-placed window, skylight or other opening can flood your home with light, whether from the sun or moon.

Have fun with your lighting choices. It's a great part of designing your home and can really show off your personality. Just remember to stick to your budget and seek professional help when you need to.

ORBIT LIGHTING

Stylish, affordable lighting solutions

Deco Range



The Orbit Lighting Deco lamp range has been designed to bring New Zealanders affordable, contemporary lighting solutions.

Particular attention has been given to styles that reflect the latest in international trends without compromising on affordability. The lamps in our range will create ambience, add warmth and enhance your rooms décor.

With a wide range of over 30 different colours, materials, shapes and sizes available there is a lamp to suit any home, apartment, hotel or motel.



Task Range



Orbit Lighting Task lamps have been designed to be both stylish and functional.

Task lamps or desk lamps are important for work environments where tasks are performed, and this range has a variety of lamps in different colours and shapes to suit the whole family.

Energy efficient lighting solutions are also covered in the Orbit Lighting Task range. Megaman® Lamps have been incorporated in selected models, as well as the trendy and versatile George model which incorporates a 1W LED globe.



View the full range at www.orbitlighting.co.nz

Available at



Who goes there?

by Shaun Evans

Whether for security or safety, a sensor light is a great option for external and internal areas of your home. If you are looking for ways to make your home safe and secure, then you need to add a motion detector light to your home.

Sensor lights work by emitting a passive infrared (PIR) beam to scan a pre-defined zone. When movement interrupts the scan, the attached light is prompted to turn on automatically, illuminating the area and helping you to find your way or startling potential intruders.



There are many motion sensor lights on the market and choosing the right one for your home is easy with the help of the fully trained Mitre 10 staff. Simply outline what you are trying to achieve. Do you need a motion sensor light at the front of your home to take in a wide field of view? Or are you after a motion sensor light for a stairwell that is difficult to navigate in the dark?

Either way, there is a large range of products to choose from and should you wish to avoid having an electrician to help you install a mains powered security light, then look at a low-impact, DIY motion sensor light option from Securimax. These options only require you to securely screw the units to a solid structure – no wiring involved.



The new DIY LED motion sensor light called “Ezy LED” from Securimax is a great option for those looking to install a motion detecting security light in an area without access to mains power or where mains power is cumbersome to tap into. This product is the ultimate solution and with its combination of battery operation and a cool white, half-watt LED, you can look forward to an effective security light with minimal installation.

When you go to Mitre 10 to look at your options, check out the Securimax “Step Lite”. This is a battery-operated sensor light that is perfect for areas like stairs or steps, where there is a risk of tripping or falling.

When dealing with electricity it's important to know the rules.



When doing work on wiring in your home, you must:

- Make sure the power is switched off before you start.
- Do not work in any enclosure where conductors or terminals are live or could become live.
- Ensure that if you install, extend or alter cables, you do not connect your work to the electricity supply yourself. The finished job must be checked and tested by a licensed electrical inspector. If it complies with safety requirements, the inspector will connect it, test it, and issue you with a “Certificate of Compliance”.
- Never do any work on a switchboard apart from replacing fuse wire or fuse cartridges.

What if something goes wrong?

If you are unsure about anything or think you might have made a mistake, make sure the main switch is off, and call a licensed electrician to check your work and correct it if necessary.

If you do work that is unsafe you could seriously injure yourself or a member of your family or cause an electrically initiated fire.

Furthermore you could be prosecuted and fined, if you commit an offence and fail to comply with the electricity legislation.

What electrical work can I do?

- You can fit plugs, cord extension sockets or appliance connectors to a flexible cord.
- You can also replace fuse wires and fuse cartridges.
- However, you cannot accept payment or reward for this work.

You can repair an appliance, but...

- You, or a close relative, must own it.
- It must be for use by you or a close relative.
- It must not be for commercial or industrial use.

You can do some work on your home's wiring, but...

- You must own and live in the property you are working on.

The following are the main electrical repairs you can do yourself at your home:

For a full list of the electrical repairs you can do on your home, refer to regulation 47 of the Electricity Regulations 1997:

1. Replace switches; socket outlets, lamp holders, ceiling roses, water heater switches, thermostats and elements.
2. Repair light fittings.
3. Move, repair or replace flexible cords that are connected to permanently connected outlets or ceiling roses.
4. Disconnect and reconnect permanently wired appliances. (Make sure the power is switched off before you start).
5. Move switches, sockets and lighting outlets, but only if they are wired with tough plastic sheathed cables.
6. Install, extend, or alter any cables, except the main cables that come from the street to your switchboard.

How can I learn more about doing my own electrical work?

Training providers like institutes of technology and polytechnics sometimes run courses for people who want to do their own electrical work. These courses are well worth attending. Also, some licensed electrical workers will give advice if you ask.

How can I find out more about the law?

The Electricity Act and Regulations are available on the Energy Safety's website:

www.energysafety.govt.nz

You can also find more information in your local library or from your local Government Bookshop.

Never be afraid to ask, as there are no silly questions when it comes to electricity, the outcomes of not knowing what you are doing are just too deadly.

ADOS



GreenStik

ENVIRONMENTALLY FRIENDLY GLUE

Environmentally friendly glue



Exceptionally Low VOC



Low Odour



Non Toxic



Non Flammable



No Solvents



WATER BASED

ADOS GreenStik Contact Adhesive is a high performance adhesive formulated for general use. It creates an instant permanent bond between surfaces, has a high bond strength and is easy to use. It is friendly to the environment and, more importantly, to your environment - where you are working.

ADOS GreenStik Contact Adhesive can be used for interior and general exterior use, is sandable and paintable. It dries to a clear film, making it suitable for bonding a number of different materials.

ADOS GreenStik Adhesives - Environmentally friendly adhesives. Stick with ADOS - New Zealand has since 1950.



www.crc.co.nz

Brushing Up

Becoming accurate and fast with a paintbrush takes time and a little practice. How To offers some tips and hints that will have you up and running in no time. Follow our plan and you will speed up your work and add quality at the same time – a real professional look can be yours.

Select your brush

First check what type of surface you are planning to paint and what type of paint you will use; talk to your Mitre 10 paint department to help. Once this has been established, it's time to choose the brushes you will need for your project. It is normally best to purchase a selection of brushes, as you will get better results in different areas:

- Use a 88mm – 100mm wide x 18mm – 25mm thick flat brush for large exterior areas.
- Use a 75mm wide flat brush for interior walls and ceilings.
- Use a tapered brush for cutting in corners.
- Use a 25mm – 63mm brush for trim and joinery.

When you have purchased your brushes, run them back and forth across your fingers to remove dust, dirt and loose bristles. Lightly moisten the brush before using waterborne paints, as this helps apply the paint more evenly.

Nylon and nylon/polyester blend brushes are great for waterborne products, as they will hold their shape and resiliency.

Technique

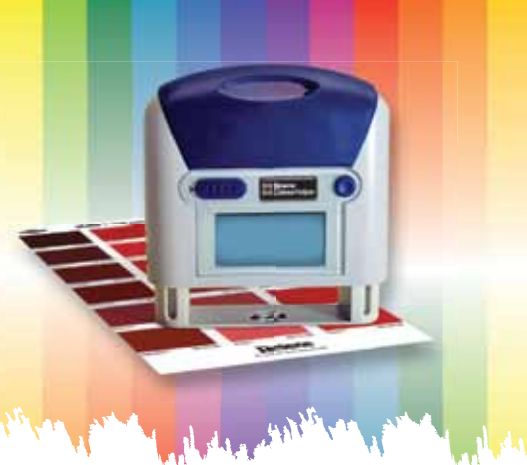
Hold the paintbrush the same way you would a pencil, near the base of the bristles, for a comfortable, controlled grip. Dip the brush into the paint up to one third or half the length of the bristles - remove and tap (don't wipe) the brush on the edge of the can.

If you're working with a full can of paint, pour half into a second container and close the original can. This will make it easier to apply the paint and tap the brush to remove any excess.

Always paint with the tips of the paintbrush, not with the sides, and hold the brush at a 45-degree angle to the surface. Avoid working the brush with your arms and shoulders: use your wrist to apply long vertical strokes on walls and ceilings. This technique will allow you to provide a smooth and uniform appearance, while avoiding lap marks.

If your brush becomes stiff or sticky, you may need to thin the paint a little with a thinner recommended on your paint tin. Should you need to take a break, wrap the bristles with glad wrap and cover the paint container.





Resene
ColourHelper

Your helping hand with colour

Need to match an existing colour or material but you have no idea of which Resene colour might be closest?

The new **Resene ColourHelper** is here to help. Simply take the **Resene ColourHelper**, push it down to 'read' the target colour three times and it will let you know three Resene colours closest to the colour you have measured. It can also suggest complementary colour options, tell you the difference between two colours so you can see how similar, or different, they are and suggest other colours.

The **Resene ColourHelper** is self sufficient so can be used in store or on the job. Contact your local Mitre 10 MEGA or Resene ColorShop to try out the **Resene ColourHelper** for yourself.

Resene

the paint the professionals use

www.resene.co.nz



Mask off the adjacent area with a low-tack masking tape, like the "ScotchBlue" range from 3M, and remove before the paint dries.

Cutting in

This refers to the application of paint to areas where one area of paint meets another, like where the walls meet the ceiling and floors. Rollers can't reach these areas, so use your 38mm – 50mm brush.

To cut in, paint the edge of the area with your brush and then roll the large surface with your roller, getting as close as you can to the edge. The closer you get, the less the difference in appearance between the painted surface and the rolled surface.

Paint Brush



NEVER STORE A BRUSH WITH PAINT LEFT ON IT.

The bristle setting is key to a quality brush and leaving a brush to soak in water or cleaners destroys this setting, so avoid at all costs.

Skirting boards

Apply low-tack masking tape to the floor at the juncture of the wall to protect flooring from paint spill or drips. Do the same to the wall above the skirting board to avoid over-painting the wall.

Using a 25mm – 50mm brush, cut in 30cm along the top edge of the skirting board then do the same at the bottom. Paint the middle of the skirting and then lay off from left to right; the middle can be painted with a small roller if you prefer.



If you are left-handed, it may be easier for you to reverse these direction instructions. At the end of the day, comfort is important to a good finish.

Brush care

A good quality brush will give you a long life with excellent results, provided you take the time to clean it properly.

Cleaning bristle brushes

Clean as soon as possible after use and follow the instructions on your paint can to help select the correct cleaning solvent:

- Work the cleaning solvent through the bristles.
- Shake the excess cleaner out of the brush after final rinsing.
- Dry the brush with paper towels to remove thinner and residual paint.
- Stubborn paint may require the use of a brush comb available from Mitre 10.
- Dry the brush thoroughly and store well.

Cleaning nylon/polyester brushes

These are usually used with waterborne paints. However, if you have used solvent-based paints, follow the bristle brush cleaning instructions above. For waterborne paints:

- Clean in warm or hot soapy water.
- Rinse clean in fresh clean water.
- Use a brush comb to help remove stubborn paint residue.
- Dry the brush thoroughly and store.

Occasionally a bath of thinner or mineral spirits, followed by washing in warm soapy water, may be needed to provide an additional clean. Misshapen nylon/polyester brushes can be reshaped after soaking them in very hot water. Exercise caution when dealing with the boiling water and wear gloves at all times. Your local Mitre 10 paint department is fully trained by all the leading suppliers, so ask them any questions you have.

NEW RANGE



Everything you need to grow a lawn your neighbours will be envious of!

NEW Lawn Seed Range

The perfect lawn is a great source of pride. Whether you are preparing a new lawn or oversowing an existing lawn Yates new premium quality lawn seeds have been specifically blended to meet New Zealand's climates and growing conditions.

Everything you need to maintain lawns

To maintain a lush, weed free lawn Yates recommends the use of **Yates Dynamic Lifter Organic Lawn Food** and **Thrive Granular lawn Food** or try **Yates New Lawn Master** which feeds your lawn for up to 12 weeks. Combat weeds with **Turfix spray**, or do the two jobs at once with Yates hose on **Weed'n'Feed**.



NEW



Everything you need to solve gardening problems is now at your fingertips!

Download the FREE Yates Garden Problem Solver App from the iTunes store.

For more information...

www.yates.co.nz

Six ways to natural remedies

by Sandy Johnson

There are some fantastic eco products on the market for controlling pest and disease damage in your garden. A lot of these great products save you time and effort, but you can also make useful concoctions at home. These natural remedies are non-toxic, which is an important consideration when growing food.

1. Garlic spray

This is a very effective formula to use against caterpillars, which can devastate your broad leaf plants.

- Take 100g of garlic and two tablespoons of mineral oil or liquid paraffin.
- Mix these together and leave to soak for 48 hours.
- Add half a litre of water and 30 grams of pure soap.
- Filter the resulting mix and store in a clearly marked plastic container.
- When you want to apply your garlic spray, mix 15ml of the solution with 1 litre of water.

2. Milk spray

Excellent for the control of mosaic disease, powdery mildew and rust on lettuce, pumpkin, strawberries, tomatoes and roses.

- Scoop 450 grams of skimmed milk powder. (The milk must be skimmed, as whole milk has fats, which become rancid and attract flies.)
- One litre of clean water.
- Add two teaspoons of liquid feed to provide nutrition and save time.
- Tip the leftovers around the roots of your rhododendrons as they react well to this mix.
- This mix will cover around 20m².
- Use when you first plant and then at 10-12 day intervals.

3. Rhubarb spray

Rhubarb contains oxalic acid in its leaves, which give it a toxic effect that you can use to control aphids, while still being safe for bees.

- 1.5kg of rhubarb leaves.
- 3.5 litres of water.
- Boil the leaves in the water for half an hour.
- Strain the mixture and add 30g of soft soap.
- The mixture is now ready for spraying, it will not last long so use it up.
- Rhubarb spray will break down quickly, requiring additional applications.

4. Kerosene

Squirting a small amount of kerosene in the hole where borer are living in your lemon tree and then plugging the hole with any putty-like substance will control this pest. Alternatively, you can insert a fine wire into the hole, effectively stabbing the grub, and then seal the hole as above.

5. Vaseline

For the control of codlin moth, smear a stocking, paper, cardboard or cotton in Vaseline and tie around the lower part of the tree trunk. This will trap the insect larvae and prevent them from reaching the fruit. However, they can hibernate in these bands, so replace them regularly with fresh bands and burn the old ones.

6. Flour and white pepper

Try dusting kitchen flour or white pepper on cabbages, cauliflowers and broccoli, as this can have a suffocating effect on caterpillars. The rain will wash away the mixture, so no need to clean it up.

Rhubarb leaves are POISONOUS and should not be eaten in any form.

“When improving your home, don't forget your pets!”

IN THE DOG HOUSE



A kennel not only gives a great night's sleep, but also provides shade from the harsh summer sun.

Whether it is summer or winter, it is important that your faithful friend is protected from the elements. Casa Royale kennels provide the ideal solution. These kennels come in two sizes to suit medium and large dogs. Each size has the following features to keep your dog comfortable in all weathers.

- Rain shield extended roof to keep the rain out and your pet dry.
- Sturdy strong and impact resistant.
- Made from insect resistant materials.
- No tools, easy assembly
- Thermal guard protection to keep the pet warm in winter and cool in summer.



Casa Royale kennels come in two roof colours; blue or green.



masterpet
never met a pet we didn't get

AVAILABLE AT MITRE 10 & MITRE 10 MEGA

June Checklist

by Sandy Johnson

June is officially the start of winter and tidying the garden at this time of year can be difficult. We recommend you do little bits and pieces when the weather allows. Consistent effort over the winter months will benefit your garden in the coming spring.

Home grown

- It's a great time to plant spinach, cabbages, cauliflower and broccoli, so go ahead and get planting.
- Check your citrus trees and remove fruit from those branches that are straining under the weight.
- Shorten fruit tree branches that are bending under the weight of fruit, rather than risk losing a productive branch.
- Prepare your potato bed now, as potato seed will be available at your Mitre10 store soon.
- Garlic requires little attention once the bulb has been planted and is a six-month crop.
- Garlic is traditionally planted on the shortest day (winter solstice) and harvest is around the longest day (summer solstice).
- When planting garlic, choose a sunny, well-drained spot and dig in compost, then plant the bulbs 6cm deep and 16cm apart (feed with blood and bone during the season).
- Lime sulphur is a good dual-purpose spray. Acting as a fungicide and an insecticide, the diluted liquid can be painted on branches of deciduous trees and shrubs to combat lichen.

WARNING! Lime sulphur stinks and it will stain your clothing so wear your old gardening gear.

- Fruit trees will need a little attention now with a clean-up spray; this can be applied to take care of any bugs that have burrowed in for the winter.

- Remove and replace any of your codlin moth bands.
- Look out for new stocks of fruit trees, as these will be available at Mitre10 about now.

Flower garden

Roses should be planted now. When choosing location, consider the following:

- Good drainage is vital; roses do not like to have wet feet.
- Roses need at least half a day of sun; preferably in the morning.
- Average soil is OK but the addition of compost before planting will give you better results
- Roses don't like to compete with other plants or trees for food, so give them space.
- Choose your plant for its strong growth and an open vase shape.
- Prune old roses and seal all cuts to stop infection.

Winter annuals such as polyanthus pansies and violas can also be planted now.

Lawn care

- Loose leaves are plentiful at this time of year. Keep them off the grass, as they will smother the lawn and create bare patches.
- Fallen leaves are ideal for your compost bin, so get collecting!



PLANT YOUR STRAWBERRIES NOW

- A warm, sunny site, with good drainage and raised garden beds is ideal.
- Most garden soils, with the addition of compost and sheep pellets, can be brought up to suitable condition for growing strawberries. Alternatively, you can purchase a ready-made strawberry mix.
- When you are planting strawberries and before you mulch, add a side dressing of strawberry food.
- Mulching is done when the strawberry flowers are out and keeps the fruit clean, while reducing the risk of infection.
- Mulch helps to conserve water and keep the weeds at bay.
- If you have an existing strawberry bed, you can rejuvenate it by removing diseased plants and infected leaves. Replant any runners and give all plants a side dressing of strawberry food.

The green garden

by Sandy Johnson

It wasn't long ago that the back garden held an important role in feeding the family, providing fruit and vegetables for the dinner table. This practise is making a comeback and there are some basic steps to help you keep your garden in great condition.

The control of disease and pests along with crop rotation and green composting can help transform your garden into a bountiful supply of fresh produce.

These days there are more man-made products available to help with pest protection and disease control, but producing great results still has some fundamental basics.

First steps

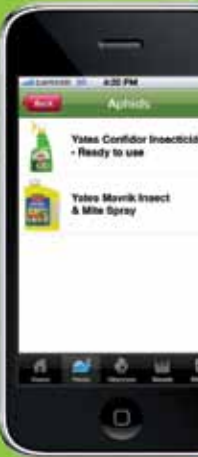
It is important to keep your garden weed free, as weeds use up valuable nutrients, which could be used by your plants. The same applies for weak or sickly plants; remove these from the vegetable garden. Unproductive fruit trees have the same effect on an orchard and need to be removed as well.

Check your garden over regularly and look out for insects and diseases, so you can treat them before your plants become badly affected.



Yates iPhone Garden Problem Solver App

Download for **FREE** from the iTunes Store
For more information visit www.yates.co.nz



Crop rotation

Growing the same crops in the same place year after year will deplete the soil of the nutrients that that particular crop needs. As each plant has different requirements, changing what you plant in an area each year will avoid draining the soil of minerals and nutrients.

An additional benefit of crop rotation is that pests and diseases will not have the opportunity to invade, as the changing crops will be unfamiliar territory.

Spending time and money to feed your plants will always pay off.

Turning over the soil in your garden or vegetable patch before planting may be time consuming, but it exposes insect larva that has burrowed in to the soil. This allows the elements and the birds to take care of them.



Compost

Just like the gardeners of days gone by, making compost is an important part of keeping your garden fresh. We do produce a fair amount of waste from the kitchen and the garden, which can be used to make compost.

Composting is not difficult, it just needs a little time and patience. Compost is simply rotten organic waste that breaks down naturally over time. Using a compost bin, you can speed up nature's process by controlling the temperature and moisture.

Here's a reminder of what goes in and what stays out of the compost bin:

IN

- Kitchen scraps – smaller pieces will decompose faster.
- Lawn clippings.
- Soft garden vegetation.
- Seaweed.
- Hay or straw.
- Paper bags.
- Leaves, except pine needles or rhubarb.
- Coffee grounds, tea and tea bags.

OUT

- Sawdust or shavings from treated wood.
- Vegetation that has been sprayed with poisons.
- Persistent weeds like oxalis or dock.
- Meat, chicken or dairy products.
- Oil or fat
- Domestic pet waste
- Thick, woody stems.

Position your compost bin in a sheltered part of the garden directly on soil – avoid concrete or hard surfaces.

Composting is like making a sandwich, start with a layer with small broken sticks about 20cm deep, this allows air to circulate and help with drainage. Put down a layer of mixed organic kitchen waste then green waste such as lawn clippings or leaves.

Add a sprinkling of Blood and Bone every few layers. This is an activator, which accelerates decomposition. Adding lime every few layers will improve the quality of the finished product.

Compost is ready when it has the consistency of lumpy potting mix and can be broken easily with a fork. Spread the compost over the ground and then dig it in to the soil a few weeks prior to planting.

Compost bins come in all shapes and sizes. For the inner city or suburban garden, the most popular is the square or round plastic one usually between 240 to 350 litres, both available at your local Mitre 10 store.

Composting leaves in a bag is a quick way to make use of autumn garden waste. Large paper bags are the best, as you can compost them as well. Fill the bags, tie up the end and punch some holes in the sides.

Nyglass family of garden tools from Atlas Home

Nyglass is a blend of Nylon and Fibreglass which are lightweight and extremely durable. These Atlas tools have ergonomically designed handles resulting in less user fatigue.



GUARANTEED **5 YEARS**

Available at leading Hardware & Garden Centres

Tricks of the trade

- Resist the urge to compress the contents.
- It is normal to have bugs, slugs and other insects around the compost bin; they are helping to break down the material, so be kind to them.
- Cold weather will slow the process; when the weather warms up, the process will start again.
- If the heap is getting too hot then turn it over with a fork to aerate.

Worm farms

Worm farms have become another popular and economical method of recycling kitchen waste. They are very easy to use and are a great way to get kids involved in the garden.

Worms feed on rotting plant matter and the waste they produce is full of minerals. A worm farm will produce castings and liquid fertiliser. The castings can be worked into your soil, while the liquid fertiliser is drained off the farm, diluted with water and applied to the garden with a watering can.

Visit the team at your local Mitre 10 for more information on available models.

DIY worm farms

You can use any waterproof container with a lid; polystyrene boxes from a fruit shop are good. Don't use cardboard, as the worms will eat that.

How To:

1. Fill the first container to at least half way with shredded newspaper, compost or grass clippings.
2. Put your worms on top (Tiger worms are best and available from Mitre 10) then add final layer of food scraps and put the lid on.
3. Feed your worms weekly, but do not overfeed. Even though they can eat their own weight in food, they are still just worms. Only feed your worms when the previous scraps have been eaten; unwanted food will just sit there and lead to odour problems.
4. As the worms outgrow the container, remove the lid and put on a second container on top of the first bin with holes drilled through the bottom; these holes ensure that the worms will climb up to the next layer.
5. Once all the worms have left the first container and are in the second, remove the bottom container and use the castings on the garden. Put the container back on the bottom to collect all the liquid fertiliser.
6. Have a third container on stand-by, which you alternate with the second layer by following Step 4 to keep the farm continuously producing.

Your garden can be a provider for your family and these traditional methods of supplying nutrients will help you – we know this because over the years countless gardeners have proved these methods. The team at Mitre 10 has all the experience and knowledge to help you get your garden set up for success.

WORMS WILL EAT:

- Fruit and vegetable scraps.
- Coffee grounds.
- Shredded paper.
- Wet cardboard.

WORMS WON'T EAT:

- Onions.
- Citrus fruit.
- Tomatoes.
- Meat.
- Treated material.



Classique

Classique is sold New Zealand wide and includes a range of ovens, cooktops, microwaves, rangehoods, dishwashers and waste disposers.

Rangehoods

600mm RANGEHOOD

- Extraction rate up to 500m³/hr
 - Stainless steel
 - 2 Year Warranty
- #CLR60SS 119723



Dishwashers

DISHWASHER

- 12 Place settings
 - 600 w x 580 d x 850mm h
 - Stainless steel
 - 2 Year Warranty
- #CLD60SS 123087



Wall Ovens

600mm WALL OVEN

- 5 Cooking functions
 - Stainless steel
 - 2 Year Warranty
- #CL625SS 119712



600mm DOUBLE WALL OVEN

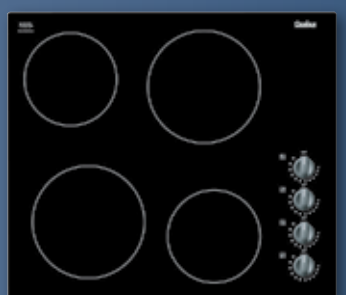
- 9 Function main oven
 - 4 Function auxiliary oven
 - Thermostatically controlled grill
 - Double glazed door
 - 2 Year Warranty
- #CL929SS 119714



Cooktops

600mm FRAMELESS CERAMIC HOB

- Side control operation
 - Black
 - 2 Year Warranty
- #CLS64B 119718



600mm EGO COOKTOP

- Stainless steel
 - 2 Year Warranty
- #CLFE64SS 127483

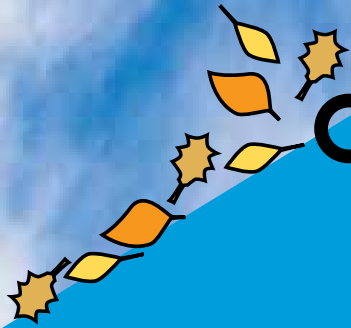


Available at

**MITRE 10
MEGA**

MITRE 10

THERE IS STILL TIME TO BEAT THE LEAVES!

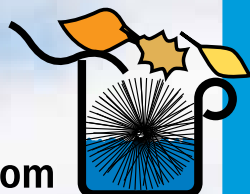


Gutter Whiskers

GUTTER & SPOUTING FILTER BRUSHES



www.brownbrush.com



www.gutterwhiskers.co.nz